

Features:

- * Bottom entry, Pass through or Top Entry.
- * Low profile 5.0mm (0.197").
- * Single row vertical mount.
- * Two choices of foot print.

Material:

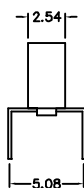
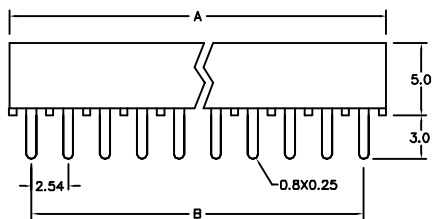
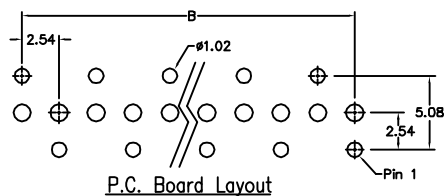
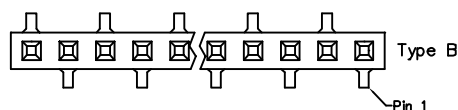
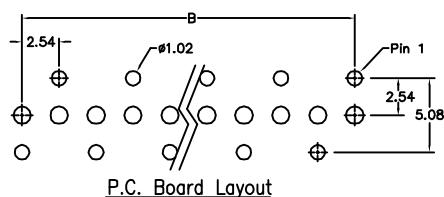
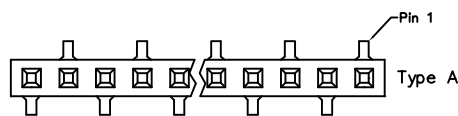
Housing: 30% Glass filled PBT UL94V-0.
Contacts: Phosphor Bronze.
Plating: Gold plated over nickel.
 Tin plated over nickel.

Electrical Characteristics:

Current Rating: 1 AMP.
Insulator Resistance: 5000MΩmin. at DC 500V.
Contact Resistance: 20mΩmax. at DC 100mA.
Operating Temperature: -55°C ~ +105°C.

Mechanical Characteristics:

Insertion Force: 160g avg. (0.64mm sq. pin)
Withdrawal Force: 120g avg. (0.64mm sq. pin)



Position	3 Thru 40
Dimension	
A	2.54 X No. of Positions +0.5
B	2.54 X No. of Positions -2.54

Ordering information

PS09- 1 40 1 A
 Series Single Row No.of Pin Per Row 1: Gold Plated *A: Type A
 2: Tin Plated *B: Type B